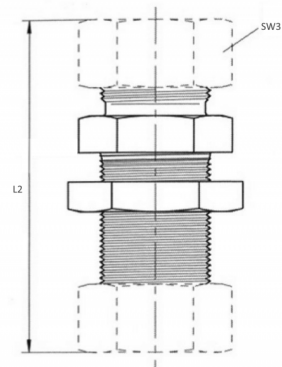
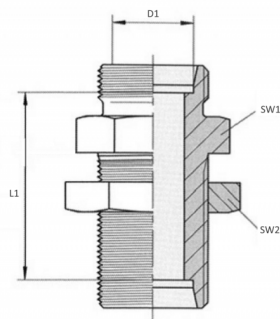


Cutting ring fittings

STRAIGHT BULKHEAD FITTING (SV)



Partnr	D1	L1	L2	SW1	SW2	SW3	Serie	Material
0429-0023-0600	6	34	64	17	17	14	L	Zinc-nickel
0429-0023-0800	8	35	65	19	19	17	L	Zinc-nickel
0429-0023-1000	10	38	68	22	22	19	L	Zinc-nickel
0429-0023-1200	12	39	69	24	24	22	L	Zinc-nickel
0429-2023-0600	6	34	64	17	17	14	L	Stainless steel 316TI
0429-2023-0800	8	35	65	19	19	17	L	Stainless steel 316TI
0429-2023-1000	10	38	68	22	22	19	L	Stainless steel 316TI
0429-2023-1200	12	39	69	24	24	22	L	Stainless steel 316TI