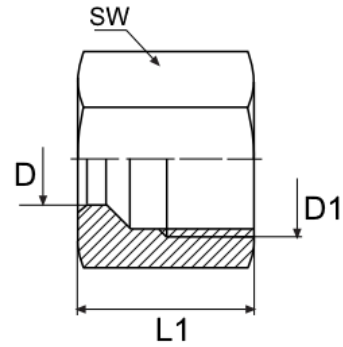


# Cutting ring fittings

## NUT (DIN 2353)



Partnr	D	Serie	D1	L1	SW	Material
0402-0000-0400	4	LL	M8x1	11	10	Zinc-nickel
0402-0000-0500	5	LL	M10x1	11,5	12	Zinc-nickel
0402-0000-0600	6	LL	M10x1	11,5	12	Zinc-nickel
0402-0001-0600	6	LL	M10x1	11,5	12	Zinc-iron
0402-0000-0800	8	LL	M12x1	12	14	Zinc-nickel
0402-0000-1000	10	LL	M14x1	13	17	Zinc-nickel
0402-0020-0600	6	L	M12x1,5	14,5	14	Zinc-nickel
0402-0020-0800	8	L	M14x1,5	14,5	17	Zinc-nickel
0402-0020-1000	10	L	M16x1,5	15,5	19	Zinc-nickel
0402-2000-0400	4	LL	M8x1	11	10	Stainless steel 316TI
0402-2000-0600	6	LL	M10x1	11,5	12	Stainless steel 316TI
0402-2000-0800	8	LL	M12x1	12	14	Stainless steel 316TI
0402-2020-0600	6	L	M12x1,5	13	14	Stainless steel 316TI
0402-2020-0800	8	L	M14x1,5	14,5	17	Stainless steel 316TI
0402-2020-1000	10	L	M16x1,5	15,5	19	Stainless steel 316TI
0402-3000-0600	6	LL	M10x1	11,5	12	Brass

Available in different sizes and suitable for various cutting ring couplings. Also available in brass version in size M06LL.