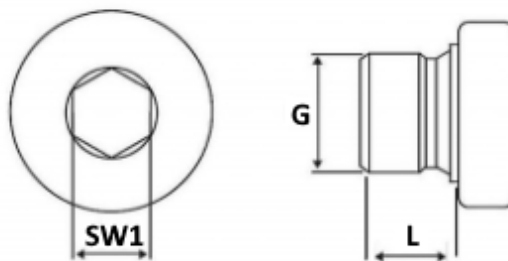


Accessoires

CLOSURE PLUGS



| Partnr | G | L | SW1 | Material |
|------------------------|-------------|-----|-----|-----------------------|
| 0410-0000-1000 | M10x1 ED | 8 | 5 | Galvanised |
| 0410-0100-0200 | R1/8 BSP ED | 8 | 5 | Galvanised |
| 0410-0001-1000 LINCOLN | M10x1 | 4,5 | 5 | Zinc-iron |
| 0410-2000-1000 | M10x1 ED | 8 | 5 | Stainless steel 316TI |
| 0410-2100-0200 | R1/8 BSP ED | 8 | 5 | Stainless steel 316TI |
| 0410-2001-1000 LINCOLN | M10x1 | 4,5 | 5 | Stainless steel 316TI |

(ED) = plugs with seal.